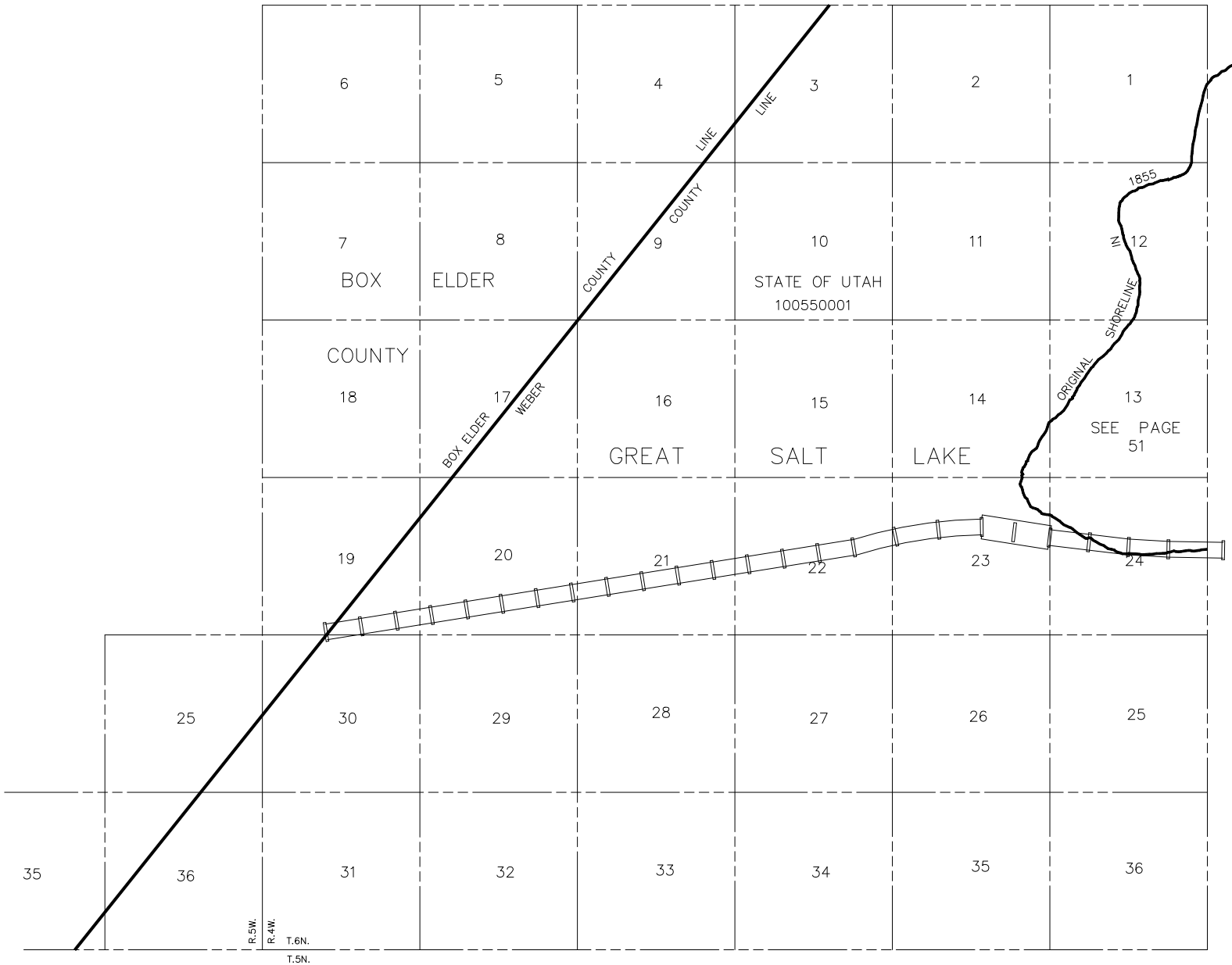


ALL OF T.6N., T.4W., S.L.B. & M.
AND
SECTIONS 25, 35 & 36, T.6N., R.5W., S.L.B. & M.

TAXING UNIT: 58

IN WEBER COUNTY
SCALE 2" = 1 MILE
SCALE 1" = 2640'

SEE BOOK 19, PAGE 67



SEE PAGE 54